

# ENTER A WORLD OF WONDER

this autumn

CHANGE OF SCANDINAVIA A/S  
AUTUMN 2012 COLLECTION

**CHANGE**  
*Lingerie*

*Charade*<sup>®</sup>  
BY CHANGE

**chic**<sup>\*</sup>  
by Change



# Unexpected moments - trends AU 12

## - ONCE UPON A DREAM

WE ARE ALL LIVING ON THE STAGE OF A HUGE SOCIAL DRAMA – SO PLAY A ROLE IN FASHION. BE A ROLE MODEL AND BE YOUR OWN HERO.

### *Earthy*

With the commercial success of last winter's country heritage trend and continued love affair with all things 70's, we see the two looks merge for autumn/winter 12.

Classic dogtooth checks are teamed with flower print and embroidery, coloured in a rustic jewel-toned palette to give a glossy & countryside feel at the same time.

### **Passing on history & know how**

Need for a break

Slowly – rethinking secrets of the past

### *Universal glamour*

Reinventing chic myths of 70's glamour a la Bianca Jagger, we once again go to Studio 54 and find inspiration. Bling is back inspired by the film *Tron: Legacy* and the tv show *Boardwalk Empire*. A playful tone comes with inspiration of *Alice in Wonderland*. The look and colours are luxurious and rich with a hint of eastern elegance.

### *Art nouveau*

Elegance of the East - Vintage sensual feeling - Diva lace look

Metallic alcohol & jewel colours – animal print - *Boardwalk Empire* – rich and playful – a bit over the top - sensual silks, sateen & fur teamed up with masculine tailoring fashion

## *Charade*®

Beautiful colours, rich embroideries inspired by art nouveau and delicate styles complete this very elegant and up to date Charade autumn collection.

Colours are autumn warm green, classic black and deep blue tones. Floral and more graphic elements in embroideries, as a new way to tell emotional messages – serene and powerful at the same time.

Christmas is strong and sexy – grey checks combined with flowers on embroidery gives a modern feel to the Christmas look. Extravagant embroideries, smooth and decorative details.



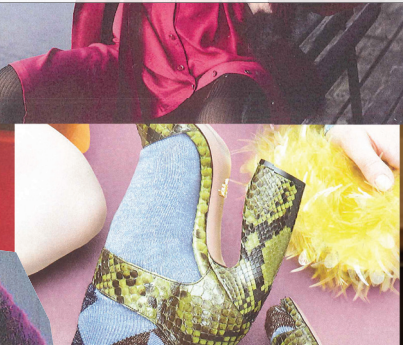
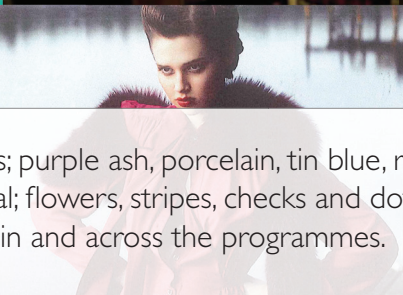




# CHANGE<sup>®</sup>

The Change autumn collection is contemporary and easy going. Enjoy the warm and charming colour palette – dark chocolate, grey and nostalgia rose leads to unexpected moments. The richness of embroidery, classic dogtooth checks and contrast edges completes the stylish look of the collection. Colours and prints are well balanced to mix and match.

The nightwear is kept in warm tones; purple ash, porcelain, tin blue, rose, ivory and black. Prints are sweet and casual; flowers, stripes, checks and dots. Styles are soft and cosy – easy to mix within and across the programmes.



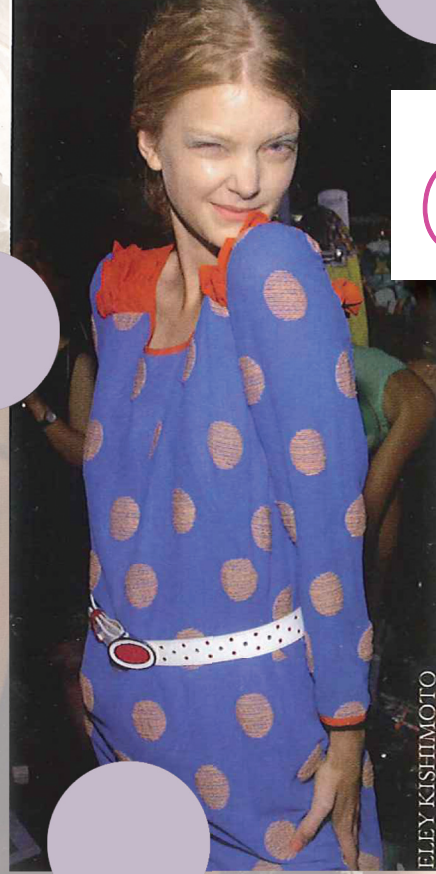
The Christmas colours are kept classic with black, red and night blue in a big variety of styles. Dots are used in a subtle way; tone in tone black flock for a classic yet contemporary Christmas look.



Nightwear offers a range from light sexy styles to warm cuddling flannel. Prints are classic and sweet.

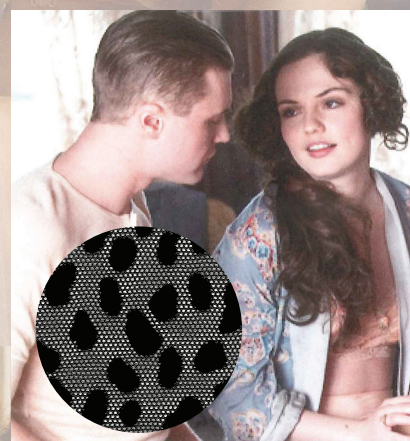


# chic



The Chic autumn collection is sweet, strong and playful at the same time. Inspired by the twisted and quirky world of Alice in Wonderland we introduce vivid colours and sweet print. Leopard mesh print is the trendy part of the collection.

Dots and flower motives are still very present in the fashion; on the autumn collection the dots are used as detail in print and on bows – in christmas we go all the way with big happy dots in classic colours charcoal and ivory.







# ENTER A WORLD OF WONDER

this autumn

CHANGE AUTUMN 2012



# DELIVERY OVERVIEW

7A

7B

8A

8B

## CHANGE AUTUMN 12 LINGERIE

I2245 SALLY

PAGE 10

I2248 DAPHNE

PAGE 9

I2283 FLORENCE

PAGE 9

I2284 LINDA

I2285 SOFIA

PAGE 10

I2286 JASMINE

PAGE 9

## CHANGE AUTUMN 12 UNDERWEAR

I2253 RIB DE LUX

PAGE 11

I2254 WOOL RIB

## CHANGE AUTUMN 12 NIGHTWEAR

I2260 MIX MATCH

PAGE 12

I2261 JERSEY W LACE

PAGE 13

I2268 VELOUR



# DELIVERY OVERVIEW

9A

9B

10A

10B

## CHANGE AUTUMN 12 LINGERIE

I2245 SALLY

I2248 DAPHNE

I2283 FLORENCE

I2284 LINDA

PAGE 10



I2285 SOFIA

I2286 JASMINE

## CHANGE AUTUMN 12 UNDERWEAR

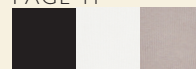
I2253 RIB DE LUX

PAGE 11



I2254 WOOL RIB

PAGE 11



## CHANGE AUTUMN 12 NIGHTWEAR

I2260 MIX MATCH

I2261 JERSEY W LACE

I2268 VELOUR

PAGE 13





# DELIVERY OVERVIEW

8B

9A

10A

10B

## CHANGE AUTUMN 12 ACCESSORIES

**I2265 GRANNY SOCKS**

PAGE 14



**I2266 TEDDY SOCK**

PAGE 14



**I2280 HOSIERY**

PAGE 14



**I2281 HOSIERY**

PAGE 15



**I2282 HOSIERY**

PAGE 15



**I2290 HOSIERY**

PAGE 15







Padded - Tai Maxi

**12283 FLORENCE**

**Composition:**  
84% Nylon, 16% Spandex

**Materials:**  
Tectronic lace and Jacquard fabric



Seamless Padded - Tai

**12286 JASMINE**

**Composition:**  
85% Nylon, 15% Spandex

**Materials:**  
Angelskin



Full Shaper - String

**12248 DAPHNE**

**Composition:**  
85% Nylon, 15% Spandex

**Materials:**  
Printed angelskin with lace



**PADED**  
70-85 B, 60-85 C-H,  
65-80 I, 65-75 J  
12283 04 0111



**FULL CUP**  
70-100 D-J, 75-90 K  
12283 04 0412



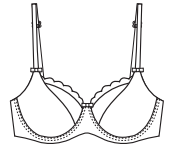
**PADED**  
70-85 B, 60-85 C-H,  
65-80 I, 65-75 J  
12286 04 0111



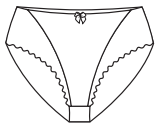
**SEAMLESS PADDED**  
60-75 A, 60-85 B-G,  
60-75 H  
12286 04 0612



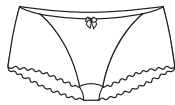
**PADED**  
70-85 B, 60-85 C-H,  
65-80 I, 65-75 J  
12248 04 0111



**FULL SHAPER**  
75-80 D, 70-85 DD, 65-  
90 E-I, 70-90 J, 70-85 K  
12248 04 4112



**TAI MAXI**  
40-52  
12283 08 0813



**HIPSTER**  
38-48  
12283 08 1014



**STRING**  
38-46  
12286 08 0113



**TAI**  
36-46  
12286 08 0614



**STRING**  
38-46  
12248 08 0113



**HIPSTER**  
38-46  
12248 08 1014



**TAI CLASSIC**  
36-46  
12283 08 0615



**STRING**  
38-48  
12283 08 0116



**HIPSTER**  
38-46  
12286 08 1015



**HIPSTER STRING**  
36-44  
12286 08 1116



**HIPSTER STRING**  
36-44  
12248 08 1115



**TAI**  
36-46  
12248 08 0616



**HIPSTER STRING**  
36-44  
12283 08 1117



1208 Black Rose



4555 Vintage Cherry



8747 Black Print





Full Shaper - Hipster String

**12245 SALLY**

Composition:  
85% Nylon, 15% Spandex

Materials:  
Angelskin and embroidery



Full Shaper - Tai

**12285 SOFIA**

Composition:  
87% Nylon, 13% Elastane

Materials:  
Techtronic lace and angelskin



Full Cup - String Classic

**12284 LINDA**

Composition:  
81% Nylon, 12% Spandex, 7% Rayon

Materials:  
Techtronic lace and fabric



**BALCONETTE** 70-80 C, 65-85 D-H, 65-80 I, 65-75 J  
12245 04 0311

**PLUNGE** 70-75 A, 65-85 B, 60-85 C-G, 65-85 H, 65-80 I  
12245 04 4012

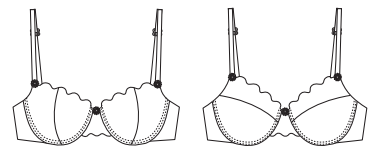
**FULL SHAPER** 75-80 D, 70-85 DD, 65-90 E-I, 70-90 J, 70-85 K  
12245 04 4113



**PADDED** 70-85 B, 60-85 C-H, 65-80 I, 65-75 J  
12285 04 0111

**SEAMLESS PADDED** 60-75 A, 60-85 B-G, 60-75 H  
12285 04 1812

**FULL SHAPER** 75-80 D, 70-85 DD, 65-90 E-I, 70-90 J, 70-85 K  
12285 04 4113



**PADDED** 70-85 B, 60-85 C-H, 65-80 I, 65-75 J  
12284 04 0111

**FULL CUP** 70-100 D-J, 75-90 K  
12284 04 0412



**STRING** 38-46  
12245 08 0114

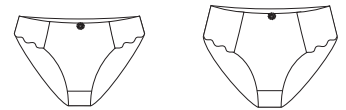
**HIPSTER** 38-46  
12245 08 1015

**HIPSTER STRING** 36-44  
12245 08 1116



**STRING** 38-46  
12285 08 0114

**TAI** 36-46  
12285 08 0615



**TAI CLASSIC** 36-44  
12284 08 0615\*

**TAI MAXI** 46-52



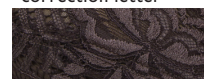
**HIPSTER** 38-48  
12284 08 1014

**STRING** 38-48  
12284 08 0116



**HIPSTER STRING** 36-44  
12284 08 1117

\*Please see correction letter



8774 Dark Chocolate



**TAI** 36-46  
12245 08 0617

**BRA CHEMISE**  
70-75 A, 65-85 B, 60-85 C-G, 65-85 H, 65-80 I  
12245 04 1618

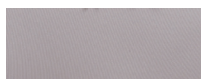


**HIPSTER** 38-46  
12285 08 1016

**HIPSTER STRING** 36-44  
12285 08 1117



1001 Black



8110 Moon Rock





Tank Top

**12253 RIB DE LUX**

**Composition:**  
95% Viscose, 5% Spandex

**Materials:**  
2x2 rib



Tank Top

**12253 RIB DE LUX**

**Composition:**  
95% Viscose, 5% Spandex

**Materials:**  
2 x2 rib



T-shirt S/S

**12254 WOOL RIB**

**Composition:**  
70% Wool, 30% Silk

**Materials:**  
2 x2 rib



**TANK TOP WITH SATEEN TAPE**

XS-XL  
12253 06 0111<sup>1</sup>



**TANK TOP WITH LACE**

XS-XL  
12253 06 0121<sup>2</sup>  
12253 06 0131<sup>3</sup>



**TANK TOP WITH SATEEN TAPE**

XS-XL  
12253 06 0141<sup>1</sup>



**TANK TOP WITH LACE**

XS-XL  
12253 06 0151<sup>2</sup>



**T-SHIRT S/S**

XS-XL

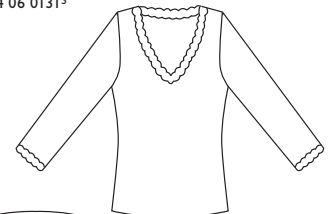
12254 06 0111<sup>1</sup>  
12254 06 0121<sup>2</sup>  
12254 06 0131<sup>3</sup>



**T-SHIRT L/S**

XS-XL

12254 09 0113<sup>1</sup>  
12254 09 0123<sup>2</sup>  
12254 09 0133<sup>3</sup>



**PANTS**

XS-XL

12254 15 0314<sup>1</sup>  
12254 15 0324<sup>2</sup>  
12254 15 0334<sup>3</sup>



3138 Purple Ash<sup>1</sup>  
1001 Black<sup>2</sup>  
1006 Ivory<sup>3</sup>



4104 Winter Red<sup>1</sup>  
4001 Rose<sup>2</sup>



1001 Black<sup>1</sup>  
1006 Ivory<sup>2</sup>  
8137 Pale Walnut<sup>3</sup>





**12260 MIX MATCH**

**Composition:**  
100% Cotton / 95% Cotton, 5% Spandex

**Materials:**  
Wolven flannel / Wolven poplin / Jersey



**PY SHIRT**  
XS-XL  
12260 02 0211<sup>2</sup>



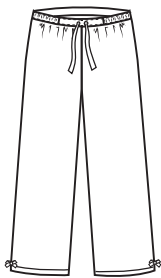
**PY SHIRT**  
XS-XL  
12260 02 0221<sup>1</sup>



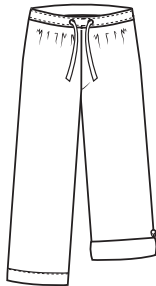
**T-SHIRT L/S**  
S-XL  
12260 09 0431<sup>4</sup>



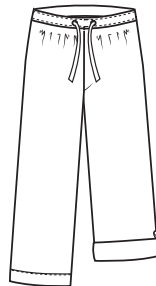
**T-SHIRT L/S**  
S-XL  
12260 09 0441<sup>5</sup>



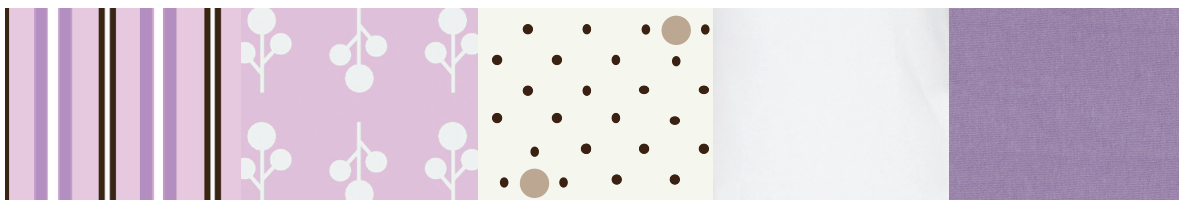
**PY PANTS**  
XS-XL  
12260 15 0412<sup>2</sup>



**PY PANTS**  
XS-XL  
12260 15 0422<sup>1</sup>



**PY PANTS**  
XS-XL  
12260 15 0451<sup>3</sup>



3148 Purple Multistripe<sup>1</sup>  
4570 Faded Rose Print<sup>2</sup>  
8778 Chocolate Dots<sup>3</sup>  
1006 Ivory<sup>4</sup>  
3138 Purple Ash<sup>5</sup>





**12261 JERSEY W LACE**

**Composition:**  
95% Rayon, 5% Spandex

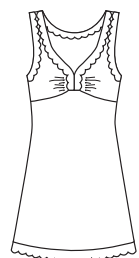
**Materials:**  
Jersey



**12268 VELOUR**

**Composition:**  
80% Cotton, 20% Polyester

**Materials:**  
Velour jersey



**CHEMISE**  
S-XL  
12261 05 0111<sup>1</sup>  
12261 05 0121<sup>2</sup>



**BIG SHIRT**  
S-XL  
12261 09 0512<sup>1</sup>  
12261 09 0522<sup>2</sup>



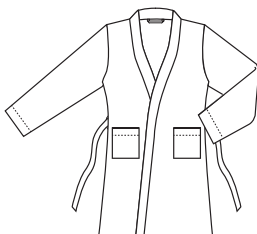
**T-SHIRT L/S**  
S-XL  
12261 09 0413<sup>1</sup>



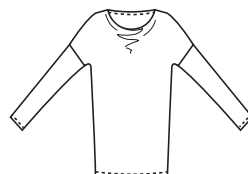
**SWEATSHIRT**  
S-XXL  
12261 16 0432<sup>3</sup>



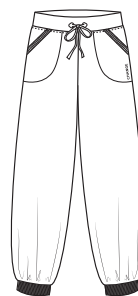
**PANTS**  
S-XL  
12261 15 0431<sup>3</sup>



**KIMONO**  
S-XL  
12261 11 0114<sup>1</sup>



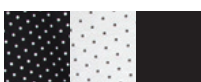
**TUNIC**  
S-XXL  
12261 09 0734<sup>3</sup>



**PANTS I/I**  
S-XXL  
12261 15 0333<sup>3</sup>



**ROBE**  
S-XXL  
12268 11 0211<sup>1</sup>  
12268 11 0221<sup>2</sup>



1207 Black Dotted<sup>1</sup>  
1026 Ivory Dotted<sup>2</sup>  
1001 Black<sup>3</sup>



3138 Purple Ash<sup>1</sup>  
1001 Black<sup>2</sup>

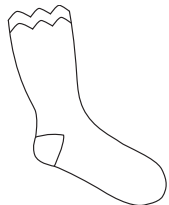




**12265 GRANNY SOCKS**

**Composition:**  
100% Polyamide

**Materials:**  
Knit



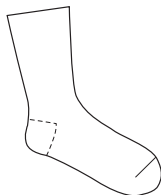
**SOCKS**  
ONE SIZE  
12265 25 0311



**12266 TEDDY SOCKS**

**Composition:**  
100% Polyamide

**Materials:**  
Knitted terry



**SOCKS**  
ONE SIZE  
12266 25 0311



**12280 HOSIERY**

**Composition:**  
90% Nylon, 10% Spandex

**Materials:**  
Knit



**70D TIGHTS**  
S-L  
12280 25 0111<sup>1</sup>  
12280 25 0112<sup>2</sup>  
12280 25 0113<sup>3</sup>  
12280 25 0114<sup>4</sup>







**I2281 HOSIERY**

Composition:  
92% Nylon, 8% Elastane

Materials:  
Knit



**I2282 HOSIERY**

Composition:  
88% Nylon, 12% Spandex

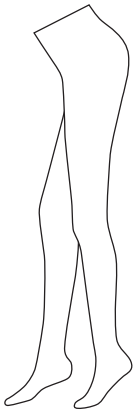
Materials:  
Knit



**I2290 HOSIERY**

Composition:  
-

Materials:  
Knit



**ZEBRA TIGHTS**  
S-L  
I2281 25 0111



**JAQUARD TIGHTS**  
S-L  
I2282 25 0111

**HANGER WITH  
HOSIERY SWATCHES**  
I2290 90 01







# ENTER A WORLD OF WONDER

this autumn



CHARADE AUTUMN 2012

## DELIVERY OVERVIEW

7B

8A

8B

9A

### CHARADE AUTUMN 12 LINGERIE

I2316 ADELINA

PAGE 19

I2317 ANGELIQUE

PAGE 19

I2326 BENEDICTE

PAGE 19

### CHARADE AUTUMN 12 NIGHTWEAR

I2328 ELEGANT NIGHTY

PAGE 20



**7B** JUL 15<sup>TH</sup> – AUG 14<sup>TH</sup>  
LINGERIE



Padded - String Classic

**12316 ADELINA**

**Composition:**  
65% Nylon, 35% Polyamide

**Materials:**  
Angelskin and embroidery

**8A** AUG 1<sup>ST</sup> – AUG 31<sup>TH</sup>  
LINGERIE



Padded - Hipster String

**12317 ANGELIQUE**

**Composition:**  
83,5% Polyamide, 16,5% Elastane

**Materials:**  
Angelskin and embroidery

**9A** SEP 1<sup>ST</sup> – SEP 30<sup>TH</sup>  
LINGERIE

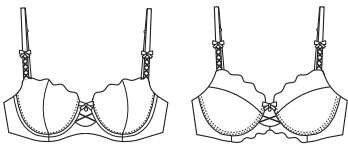


Bra Chemise

**12326 BENEDICTE**

**Composition:**  
65% Polyamide, 35% Elastane

**Materials:**  
Mesh with embroidery / Lace embroidery



**PADED**

70-85 B, 60-85 C-H,  
65-80 I, 65-75 J  
12316 04 0111

**FULL CUP**

70-100 D-J, 75-90 K  
12316 04 0412



**TAI**

36-44



**TAI MAXI**

46-52

12316 08 0613\*



**HIPSTER**

38-48

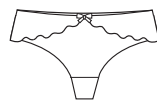
12316 08 1014



**STRING**

38-48

12316 08 0115



**HIPSTER STRING**

36-44

12316 08 1116



**PADED**

70-85 B, 60-85 C-H,  
65-80 I, 65-75 J  
12317 04 0111

**BALCONETTE**

70-80 C, 65-85 D-H,  
65-80 I, 65-75 J  
12317 04 0312

**FULL SHAPER**

75-80 D, 70-85 DD,  
65-90 E-I, 70-90 J,  
70-85 K  
12317 04 4113



**STRING**

38-46

12317 08 0614



**HIPSTER**

38-46

12317 08 1015



**HIPSTER STRING**

36-44

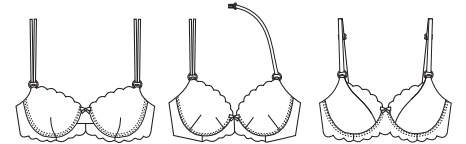
12317 08 1116



**TAI**

36-46

12137 08 0617



**BALCONETTE**

70-80 C, 65-85 D-H,  
65-80 I, 65-75 J  
12326 04 0311

**PLUNGE**

70-75 A, 65-85 B,  
60-85 C-G, 65-85  
H, 65-80 I  
12326 04 4012

**FULL SHAPER**

75-80 D, 70-85 DD,  
65-90 E-I, 70-90 J,  
70-85 K  
12326 04 4113



**STRING**

38-46

12326 08 0114



**TAI ITALIAN**

36-44

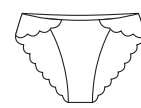
12326 08 0615



**HIPSTER**

38-46

12326 08 1016



**TAI CLASSIC**

40-46

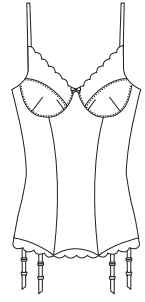
12326 08 0617



**HIPSTER STRING**

36-44

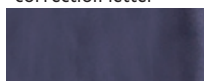
12326 08 1119



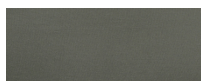
**BRA CHEMISE**

70-85 B, 60-85 C-H,  
65-80 I, 65-75 J  
12326 04 1618

\*Please see correction letter



2001 Night Blue



7121 Olive



1001 Black

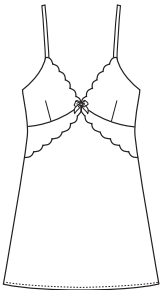


Kimono

**12328 ELEGANT NIGHTY**

Composition:  
**TBA**

Materials:  
Woven fabric with techtronic lace



**CHEMISE**

XS-XL  
12328 05 0111



**KIMONO**

XS-XL  
12328 11 0112



1001 Black



# PLAY UP

your girlie side



CHIC AUTUMN 2012

## DELIVERY OVERVIEW

7B

8B

9A

9B

### CHIC AUTUMN 12 LINGERIE

**I2120 CAMILLE**

PAGE 23



**I2121 RITA**

PAGE 23



**I2122 PENNY**

PAGE 24



**I2124 ADA**

PAGE 23



**I2125 ASTRID**

PAGE 24







Plunge - String Low



Plunge - Hipster Low

PLEASE SEE CORRECTION LETTER FOR COLOUR DRAWINGS

**12120 CAMILLE**

**Composition:**  
87% Nylon, 13% Spandex

**Materials:**  
Angelskin with techtronic lace

**12121 RITA**

**Composition:**  
82% Nylon, 18% Spandex

**Materials:**  
Techtronic lace

**12124 ADA**

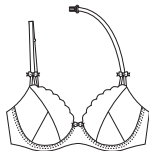
**Composition:**  
87% Nylon, 13% Spandex

**Materials:**  
Printed angelskin



**PLUNGE**

70-75 A, 65-85 B,  
60-85 C-G, 65-85 H, 65-80 I  
12120 04 4011



**PLUNGE**

70-75 A, 65-85 B,  
60-85 C-G, 65-85 H, 65-80 I  
12121 04 4011



**PLUNGE**

70-75 A, 65-85 B, 60-85  
C-G, 65-85 H, 65-80 I  
12124 04 4011



**FULL SHAPER**

75-80 D, 70-85 DD,  
65-90 E-I, 70-90 J,  
70-85 K  
12124 04 4112



**TAI**

36-46  
12120 08 0612



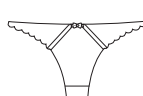
**HIPSTER LOW**

34-44  
12120 08 1813



**TAI**

36-46  
12121 08 0612



**STRING**

34-44  
12121 08 0113



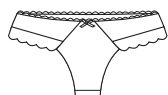
**TAI**

36-46  
12124 08 0613



**STRING**

34-44  
12124 08 0114



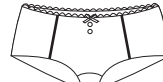
**HIPSTER STRING**

34-44  
12120 08 1114



**HIPSTER LOW**

34-44  
12121 08 1814



**HIPSTER LOW**

34-44  
12124 08 1815



1124 Mole Grey



4189 Pinot Noir



8779 Flower Print



Seamless Padded - Hipster Low

**I2122 PENNY**

**Composition:**  
87% Nylon, 13% Spandex

**Materials:**  
Angelskin with techtronic lace



Padded - String Low

**I2125 ASTRID**

**Composition:**  
87% Nylon, 13% Spandex

**Materials:**  
Flock mesh



**SEAMLESS PADDED**  
60-75 A, 60-85 B-G,  
60-75 H  
I2122 04 0611



**PADDED**  
70-85 B, 60-85 C-H,  
65-80 I, 65-75 J  
I2125 04 0111



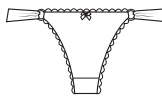
**TAI**  
36-46  
I2122 08 0612



**HIPSTER STRING**  
34-44  
I2122 08 0113



**TAI**  
36-46  
I2125 08 0612



**STRING**  
34-44  
I2125 08 0113



**HIPSTER LOW**  
34-44  
I2122 08 1814



**HIPSTER LOW**  
34-44  
I2125 08 1814



4557 Wild Aster



1119 Grey Flock